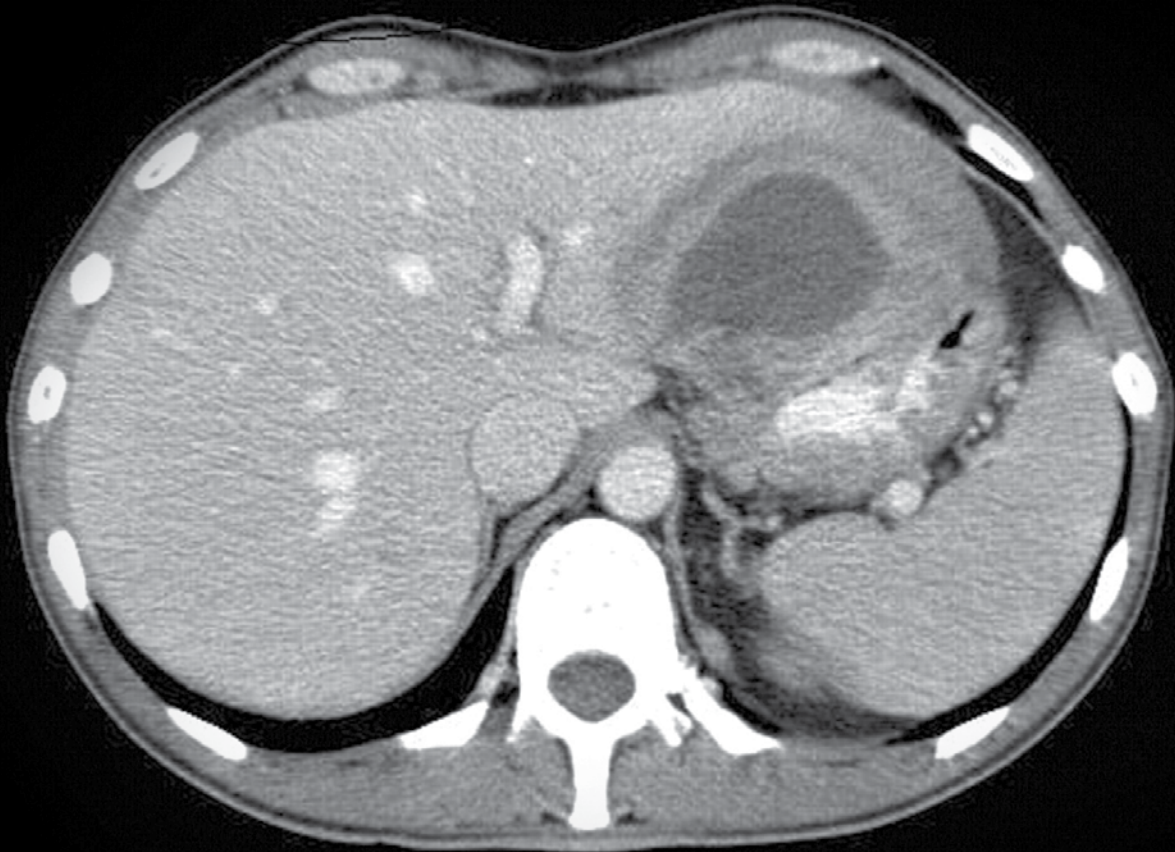
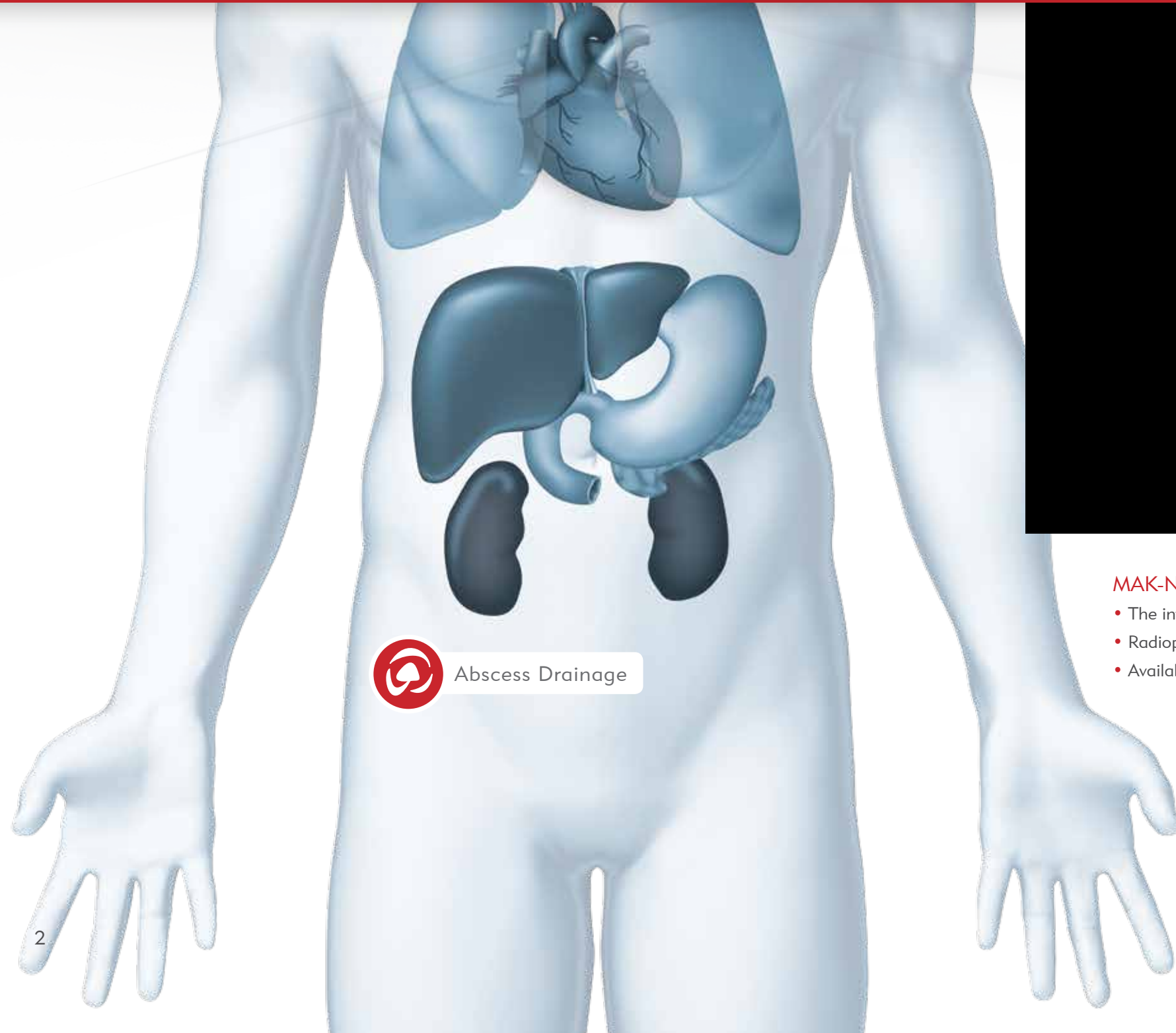


CT Guided Drainage Procedures



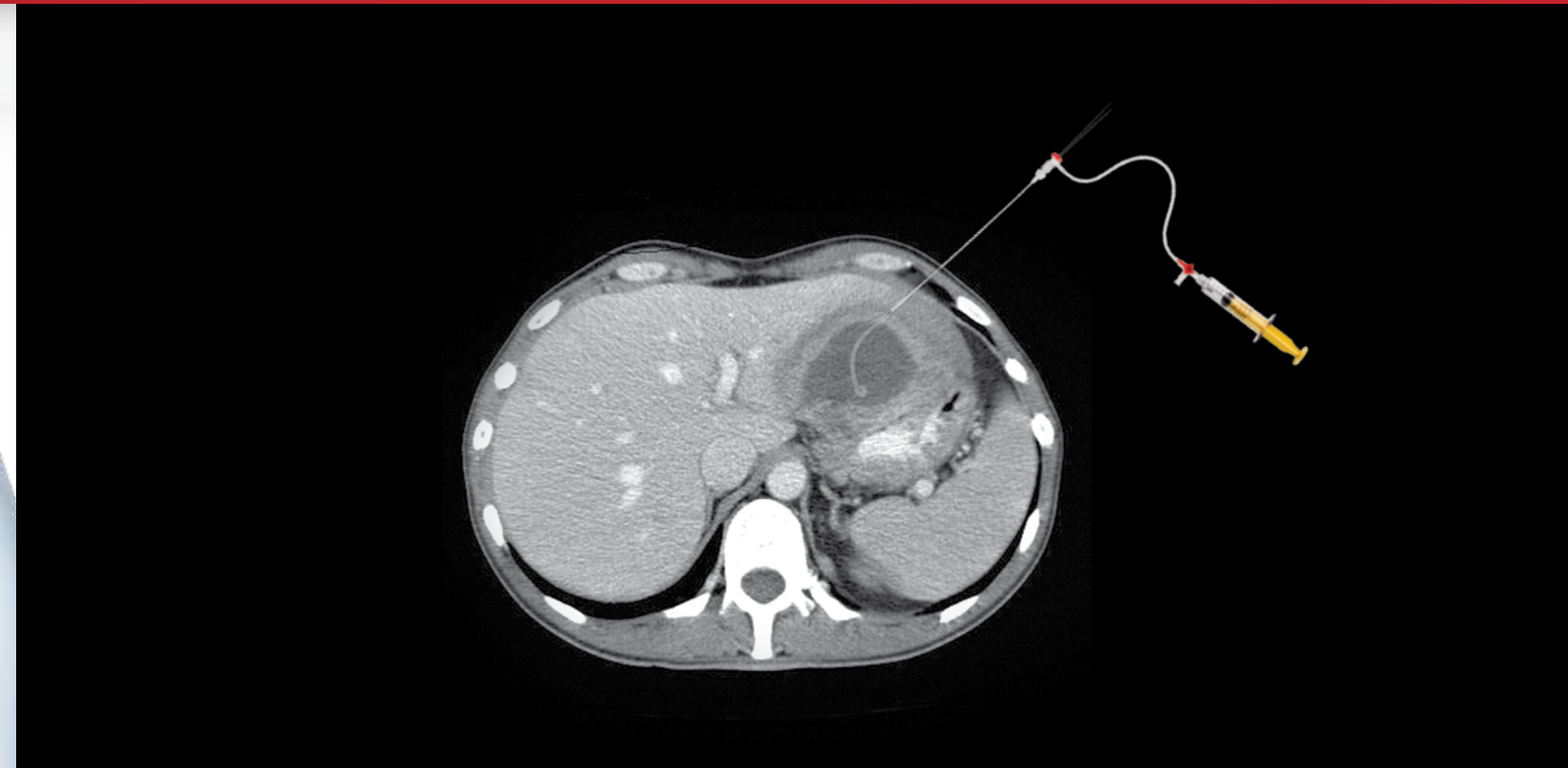
Prepare

Merit Medical offers an **INTEGRATED** suite of products designed to support your CT guided drainage procedures every step of the way. By listening to you and understanding your needs, we are able to create **PRODUCTS** that meet your clinical challenges with **SUPERIOR** performance and reliable **QUALITY**. We provide the products you need, when you need them, to help you deliver **EFFICIENT**, patient-focused, and cost-effective **CARE**.



Access

Achieve **QUICK** and efficient access with an introducer system designed with a radiopaque marker for more **PRECISE** location of the introducer tip.



MAK-NV™

- The introducer's superior tip design decreases buckling and introducer peel-back
- Radiopaque marker tip makes the introducer tip more easily visualized
- Available in multiple configurations to suit your preferred style

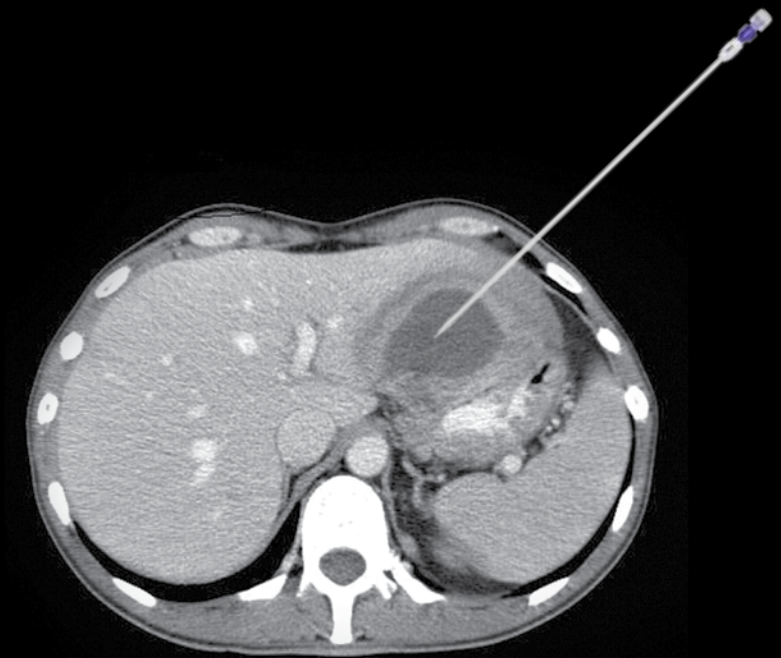
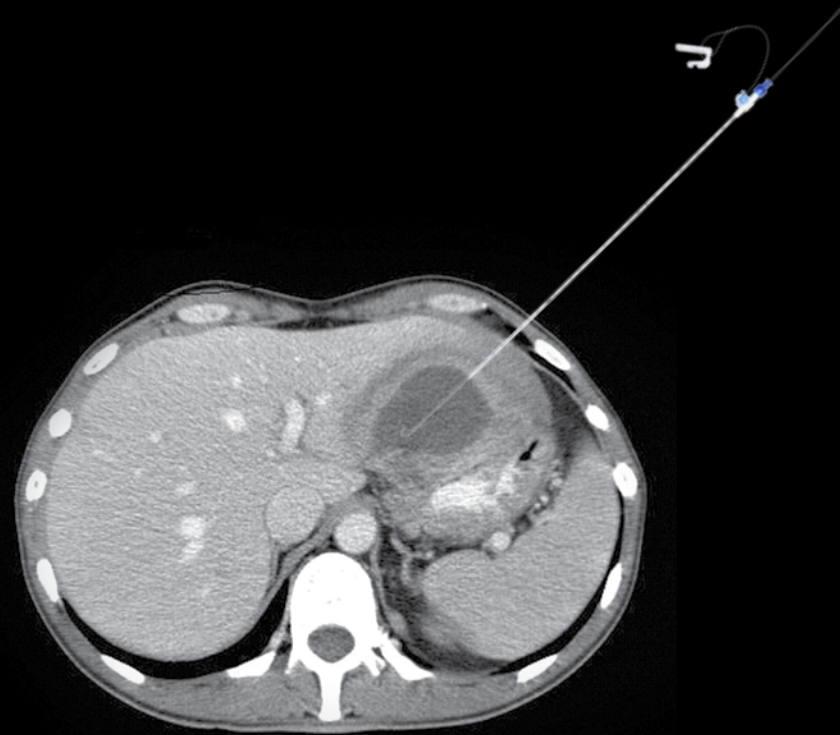
MAK-NV™
Introducer System



CT Drainage Procedure

DRAIN

For all-purpose drainage procedures, ReSolve® locking and non-locking drainage catheters help to **LESSEN TRAUMA** and promote more accurate placement. The tip of the locking drainage catheter is located on the inside of the pigtail curve to prevent irritation of the surrounding tissue. The catheter shaft has depth-positioning markers to facilitate **ACCURATE** placement and to act as a reference for correct **POSITIONING**.



- Tapered tip and hydrophilic coating facilitate a smooth introduction to reduce patient discomfort
- Depth markers aid in accurate placement and act as a reference for correct positioning
- Catheter tip positioned within pigtail curve to reduce tissue irritation.

ReSolve®
Locking Catheter



- Tapered tip and hydrophilic coating facilitate a smooth introduction to reduce patient discomfort
- Large drainage holes maximize drainage

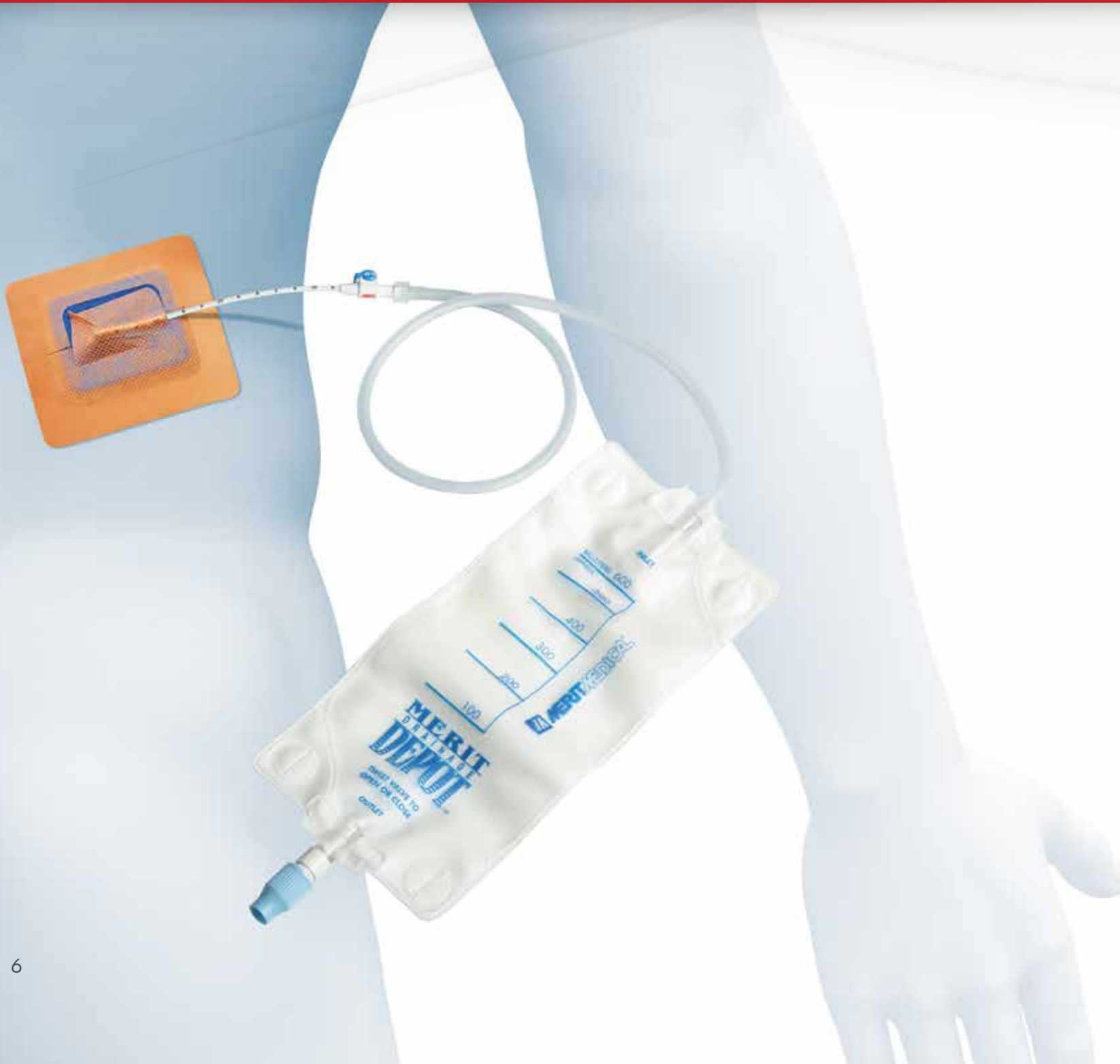
ReSolve®
Non-Locking Catheter



CT Drainage Procedure

SECURE AND CONTAIN

Drainage procedures require **SAFE** and **SECURE** collection and catheter fixation. Our securement devices hold catheters in place without the use of needles, reducing the risk of sharps injuries and providing a safer option for clinicians. They provide a **COMFORTABLE** option for patients. Our drainage bags have **EASY-TO-READ** markings to identify fluid volume, a twist valve for easy disposal of fluids, and an internal **ANTI-REFLUX** valve.



INTEGRATE

Merit Medical can help you **OPTIMIZE** the economics of delivering clinical care quickly, efficiently, and safely by offering integrated procedure packs designed by you with your preferred products, organized in the order that they are needed.



BackStop® Plus
Disposal System



VacLok®
Vacuum Pressure Syringe



InQwire®
Guide Wires



ReSolve®
Locking
Catheter Tray

CT Drainage Procedure

ACCESS

Catalog Number	Introducer	Dilator	0.018" X 60 cm Guide Wire	0.038" 3 Mm J Heavy Duty Double Ended Guide Wire	Needle	Box Quantity	Price
MAK-NV-001	6F X 20 cm	4F	SS/PT	150 cm	21G X 15 cm Trocar	10	
MAK-NV-002	6F X 20 cm	4F	NT/PT	150 cm	21G X 15 cm Trocar	10	
MAK-NV-004	6F X 20 cm	4F	NT/PT	-	21G X 15 cm Trocar	10	
MAK-NV-016	6F X 20 cm	4F	SS/PT	80 cm	21G X 15 cm Chiba	10	

DRAIN

Catalog Number	French Size	Catheter Length (cm)	Accepts Guide Wire	Drainage Holes	Marker Band	Tip Configuration	Box Quantity	Price
RLC15-8-038MB	8	15	0.038" (0.97 mm)	8	Yes	Locking Pigtail	5	
RLC15-10-038MB	10	15	0.038" (0.97 mm)	8	Yes	Locking Pigtail	5	
RLC-8-038MB	8	25	0.038" (0.97 mm)	8	Yes	Locking Pigtail	5	
RLC-10-038MB	10	25	0.038" (0.97 mm)	8	Yes	Locking Pigtail	5	
RLC-12-038MB	12	25	0.038" (0.97 mm)	9	Yes	Locking Pigtail	5	
RLC-14-038MB	14	25	0.038" (0.97 mm)	9	Yes	Locking Pigtail	5	
RNL-6-038J	6	20	0.038" (0.97 mm)	4		J	5	
RNL-8-038J	8	25	0.038" (0.97 mm)	4		J	5	

SECURE

Fixation Device	Catalog Number	Catheter Size Fixated	Box Quantity	Price
Revolution	CFG624	6F-24F	25	
StayFIX	680ME	5F-14F	25	
StayFIX	685ME	12F-22F	20	

CONTAIN

Catalog Number	Bag Fluid Capacity (mL)	Jackson-Pratt Fluid Capacity (mL)	Box Quantity	Price
FZ624	600	-	20	
K08-01907	-	100	10	
K10-03450	600	100	10	

INTEGRATE

Catalog Number	Description	Box Quantity	Price
LWSTDA3580	0.035" X 80 cm Laureate® Hydrophilic Guide Wire	5	
LWSTFA3580	0.035" X 80 cm Laureate Stiff Hydrophilic Guide Wire	5	
6680-61	0.035" X 80 cm Super Stiff guide wire	10	
IQ35F80J105RS	0.035" x 80 cm Rosen 1.5 mm J	10	
VAC160	60 mL Vacuum Pressure Syringe	25	
Mbsp100	500 mL BackStop Plus Disposal System	10	
K12-08322	8F x 20 cm Dilator	10	
K12-08323	10F x 20 cm Dilator	10	



For a complete inventory please visit our website or talk to your Merit Medical Professional



Understand. Innovate. Deliver.™

Merit Medical Systems, Inc.
1600 West Merit Parkway
South Jordan, Utah 84095
1.801.208.4300
1.800.35.MERIT

Merit Medical Europe, Middle East, & Africa (EMEA)
Amerikalaan 42, 6199 AE Maastricht-Airport
The Netherlands
+31 43 358 82 22

Merit Medical Ireland Ltd.
Parkmore Business Park West
Galway, Ireland
+353 (0) 91 703 733

Merit.com

Austria
0800 295 374

Belgium
0800 72 906 (Dutch)
0800 73 172 (Français)

Denmark
80 88 00 24

Finland
0800 770 586

France
0800 91 60 30

Germany
0800 182 0871

Ireland (Republic)
1800 553 163

Italy
800 897 005

Luxembourg
8002 25 22

Netherlands
0800 022 81 84

Norway
800 11629

Portugal
308 801 034

Russia
+7 495 221 89 02

Spain
+34 911238406

Sweden
020 792 445

Switzerland
(Deutsch)
+41 225180252
(Français)
+41 225948000
(Italiano)
+41 225180035
UK
0800 973 115